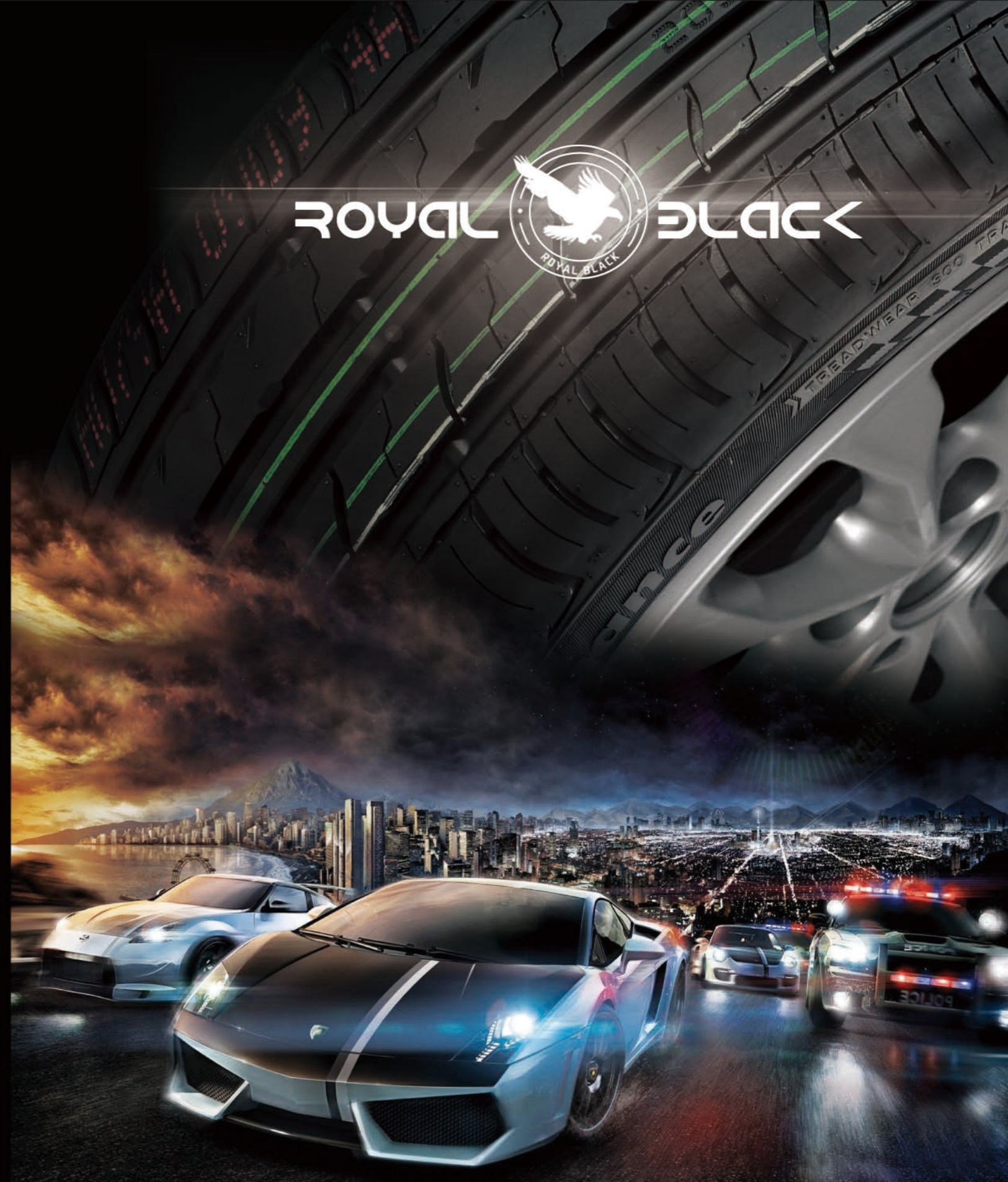



ROYAL  BLACK

ROYAL  BLACK



2017 PRODUCT CATALOGUE
Royal Black · Royal Enjoy



ROYAL BLACK

YOUR TRUSTWORTHY TIRE
CONTROL • ECO • COMFORT

BRIEF INTRODUCTION

Based on HAOHUA TIRE manufacture, QINGDAO BLACK TIRE CO.,LTD is built by the same boss and work as wholly owned subsidiary to develop the All New "ROYAL BLACK" Brand Tires worldwide upon 100% exclusivity.

Royal Black Brand have covered a complete tires range with over 300 sizes, with 15 patterns made for PCR,LTR,SUV 4X4 H/T A/T M/T,VAN and Winter tyres and 20 patterns for Truck and Bus Tyres. All tires are produced under the first class equipments and strict quality management system to ensure the stable quality. Together with our producing technology, our strict quality control, and our highly regulated safety standards, Royal Black continues to give you Royal Enjoy while driving on your road , More than ever.

ROYAL BLACK

Royal Black • Royal Enjoy



Royal Black · Royal Enjoy



**PASSENGER
LIGHT TRUCK
RADIAL TIRES**

TABLE OF CONTENTS

1-2	ROYAL PASSENGER
3-4	ROYAL PERFORMANCE
5-6	ROYAL SPORT
7-8	ROYAL COMMERCIAL
9-10	ROYAL VAN
11-12	ROYAL PRIME
13-14	ROYAL COMFORT
15-16	ROYAL A/T
17-18	ROYAL M/T
19-20	ROYAL SNOW
21-22	ROYAL WINTER
23-24	ROYAL STUD
25-26	ROYAL M/T II
27-28	ROYAL A/S
29-30	ROYAL GP100

ROYAL BLACK

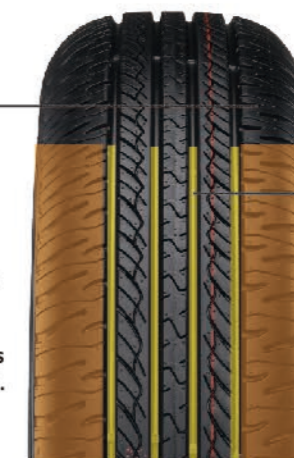
Royal Black · Royal Enjoy

ROYAL PASSENGER

FEATURES:

Safety Performance on Wet Grounds Four wide longitudinal straight groove efficiently drain off water, improving sideslip performance on wet grounds.

Small shoulder circumferential longitudinal grooves at both sides and plump little pattern blocks on shoulders bring ideal rigidity and excellent handing. Meanwhile, small circumferential longitudinal grooves enable tire shoulders to diffuse heat quickly, providing higher safety performance.



Comfort and Quietness Small cross-slots at both sides of continuous circumferential ribs in the middle simulate the muffler design principle and have strong noise absorption capacity. Thus, noise is effectively reduced, and riding comfort is improved.



ROYAL PASSENGER



Pattern specifically designed for a comfortable ride with low noise level.

Large groove design for improved water dispersion capabilities and prevent from hydroplaning.

Royal Passenger provides a comfortable, confident driving for highway and everyday use.

Series	Inch	Size	Load Index	Speed Rating	Rim Width (inch)	OD (mm)	SW (mm)	Sidewall Type	EU TIRE LABEL			
									RRC	Wet Grip	Noise Value(dB)	Noise Class
55	15	175/55R15	77	H	5.0	573	182	BSW	E	C	68	🔊
	15	185/55R15	82	V	6.0	585	194	BSW	E	C	68	🔊
	16	205/55R15	91	V	6.5	632	214	BSW	E	C	69	🔊
	13	175/60R13	77	H	5.0	540	177	BSW	E	C	68	🔊
	14	165/60R14	75	H	5.0	554	170	BSW	E	C	68	🔊
	14	185/60R14	82	H	5.5	578	189	BSW	E	C	68	🔊
60	14	195/60R14	86	H	6.0	590	201	BSW	E	C	69	🔊
	14	205/60R14	88	H	6.0	602	209	BSW	E	C	69	🔊
	15	175/60R15	81	H	5.0	591	177	BSW	E	C	68	🔊
	15	185/60R15	84/88	H XL	5.5	603	189	BSW	E	C	68	🔊
	15	195/60R15	88	H/V	6.0	615	201	BSW	E	C	69	🔊
	15	205/60R15	91	V	6.0	627	209	BSW	E	C	69	🔊
	15	215/60R15	94	H	6.5	638	218	BSW	E	C	70	🔊
	16	205/60R16	92/96	V/H XL	6.0	652	209	BSW	E	C	69	🔊
	16	215/60R16	95/88	H/V V XL	6.5	664	221	BSW	E	C	70	🔊
	16	225/60R16	98	H	6.5	676	228	BSW	E	C	70	🔊
65	16	235/60R16	100	H	7.0	688	240	BSW	E	C	70	🔊
	13	155/65R13	73	T	5.0	540	157	BSW	E	C	68	🔊
	13	165/65R13	77	T	5.0	544	170	BSW	E	C	68	🔊
	14	155/65R14	75	H	4.5	557	154	BSW	E	C	68	🔊
	14	165/65R14	79	H	5.0	570	170	BSW	E	C	68	🔊
	14	175/65R14	82/86	T/H T XL	5.0	584	177	BSW	E	C	68	🔊
	14	185/65R14	86	T/H	5.5	609	189	BSW	E	C	68	🔊
	15	175/65R15	84	H	5.0	609	177	BSW	E	C	68	🔊
	15	185/65R15	88/92	H XL	5.5	621	189	BSW	E	C	68	🔊
	15	195/65R15	91/95	H/V H XL	6.0	635	201	BSW	E	C	69	🔊
70	15	205/65R15	94	H/V	6.0	647	209	BSW	E	C	69	🔊
	15	215/65R15	96/100	H XL	6.5	661	221	BSW	E	C	70	🔊
	16	215/65R16	98	H	6.5	686	221	BSW	E	C	70	🔊
	13	155/70R13	75	T	4.5	548	157	BSW	E	C	68	🔊
	13	165/70R13	79	T	5.5	562	170	BSW	E	C	68	🔊
	13	175/70R13	82	T	5.5	576	177	BSW	E	C	68	🔊
	13	185/70R13	86	T	5.5	590	189	BSW	E	C	68	🔊
	14	165/70R14	81	T/H	5.0	588	170	BSW	E	C	68	🔊
	14	175/70R14	84/88	H/T XL	5.0	602	177	BSW	E	C	68	🔊
	80	14	185/70R14	88	H	5.5	616	189	BSW	E	C	68
14		195/70R14	91	H	6.0	630	201	BSW	E	C	69	🔊
14		205/70R14	95	H	6.0	644	209	BSW	E	C	69	🔊
14		215/70R14	96	H	6.5	654	220	BSW	E	C	70	🔊
15		205/70R15	96	H	6.0	669	209	BSW	E	C	69	🔊
15		215/70R15	98	H	6.5	683	221	BSW	E	C	70	🔊
80	15	225/70R15	100	H	6.5	697	228	BSW	E	C	70	🔊
	13	155/80R13	79	T	4.5	578	157	BSW	E	C	68	🔊
	13	165/80R13	83	T	4.5	598	165	BSW	E	C	68	🔊



FEATURES:

Comfort and Quietness Optimized tread pattern groove design and pattern pitch length arrangement (inside the box) greatly reduce driving noise and improve driving comfort.



Operation and Control on Dry Grounds Unique central pattern ribs improve response speed of operation and control and stability of straight driving, and wide shoulder pattern blocks improve turning stability.

Operation and Control on wet Grounds Four wide longitudinal grooves effectively drain water and improve drainage performance on wet grounds.

ROYAL SPORT



Viable pattern patches reduce noise and provides a quiet and comfortable ride.
 Four wide grooves improve water evacuation and effectively reduce aquaplaning.
 The center pattern rib ensures a superior lateral handling; the sipes on the rib provide comfortable ride.

Series	Inch	Size	Load Index	Speed Rating	Rim Width (inch)	OD (mm)	SW (mm)	Sidewall Type	EU TIRE LABEL			
									RRC	Wet Grip	Noise Value(dB)	Noise Class
50	20	255/50R20	109	V XL	8.00	764	270	BSW	E	C	72	4
	20	265/50R20	111	V XL	8.50	774	277	BSW	E	C	72	4
	20	285/50R20	116	V XL	9.00	794	297	BSW	E	C	72	4
55	18	225/55R18	98	H	7.00	705	233	BSW	E	C	71	4
	18	235/55R18	104	H XL	7.50	715	245	BSW	E	C	71	4
	20	275/55R20	117	V XL	8.50	810	284	BSW	E	C	72	4
60	17	215/60R17	96	H	6.50	680	221	BSW	E	C	71	4
	17	225/60R17	99	H	6.50	702	228	BSW	E	C	71	4
	17	235/60R17	102	H	7.00	714	240	BSW	E	C	71	4
	18	225/60R18	100	H	6.50	727	228	BSW	E	C	71	4
	18	245/60R18	105	H	7.00	751	254	BSW	E	C	72	4
	18	255/60R18	112	H XL	7.50	767	260	BSW	E	C	72	4
65	16	225/65R16	109	H	7.50	737	262	BSW	E	C	71	4
	17	215/65R17	99	H	6.50	710	221	BSW	E	C	71	4
	17	225/65R17	102	H	6.50	724	228	BSW	E	C	71	4
	17	235/65R17	104	H	7.00	738	240	BSW	E	C	71	4
	17	245/65R17	111	H XL	7.00	750	248	BSW	E	C	71	4
	17	255/65R17	110	H	7.50	764	260	BSW	E	C	71	4
65	17	265/65R17	112	H	8.00	776	272	BSW	E	C	71	4
	17	275/65R17	115	H	8.00	791	279	BSW	E	C	72	4
	17	285/65R17	116	H	8.50	802	292	BSW	E	C	72	4
	18	235/65R18	110	H XL	7.00	761	244	BSW	E	C	72	4
18	275/65R18	116	H	8.00	789	286	BSW	E	C	72	4	



ROYAL COMMERCIAL



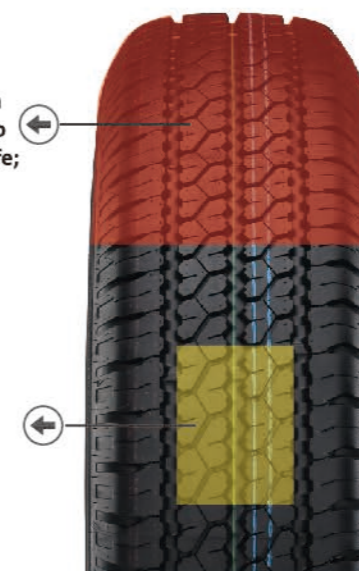
↙ Aggressive on-road tread design.
 Engineered to power through mud and snow.
 Deep grooves dispers water from contact area,
 which also
 improve handling and breaking on wet surfaces.
 Tough sidewall reinforcements enhance durability
 and tire life. ↘



↻ FEATURES:

Deepen and plump pattern design with a wear-resistant formula enable tires to have a very long mileage and service life;

Longitudinal pattern grooves with horizontal curve grooves produce more obvious drainage effects, so that it is safer when driving in a raining day.



Enhanced sidewall support and bead design improve anti-load performance of tires and effectively avoid early damages;

Series	Inch	Size	Load Index	Speed Rating	Rim Width (inch)	OD (mm)	SW (mm)	Sidewall Type	EU TIRE LABEL			
									RRC	Wet Grip	Noise Value(dB)	Noise Class
65	14	175/65R14C	90/88	T	5.00	588	170	BSW	E	C	70	🔊
	15	215/65R15C	104/102	T	6.50	661	221	BSW	E	C	71	🔊
	16	195/65R16C	104/102	R	6.00	660	201	BSW	E	C	71	🔊
	16	205/65R16C	107/105	R	6.00	672	209	BSW	E	C	71	🔊
	16	215/65R16C	109/107	R	6.50	686	221	BSW	E	C	72	🔊
	16	225/65R16C	112/110	R	6.50	698	228	BSW	E	C	72	🔊
70	16	235/65R16C	115/113	R	7.00	712	240	BSW	E	C	72	🔊
	14	165/70R14C	89/87	T	5.00	584	177	BSW	E	C	70	🔊
	15	195/70R15C	104/102	R	6.00	655	201	BSW	E	C	71	🔊
	15	205/70R15C	106/104	R	6.00	669	209	BSW	E	C	71	🔊
	15	215/70R15C	109/107	R	6.50	683	221	BSW	E	C	72	🔊
	15	225/70R15C	112/110	R	6.50	697	228	BSW	E	C	72	🔊
75	16	175/75R16C	101/99	R	5.00	668	175	BSW	E	C	71	🔊
	16	185/75R16C	104/102	R	5.00	684	184	BSW	E	C	71	🔊
	16	195/75R16C	107/105	R	5.50	698	196	BSW	E	C	71	🔊
	16	205/75R16C	110/108	R	5.50	714	203	BSW	E	C	71	🔊
85	16	215/75R16C	113/111	R	6.00	728	216	BSW	E	C	72	🔊
	12	155R12C	88/86	R	4.50	550	157	BSW	E	C	71	🔊
	13	155R13C	90/88	R	4.50	578	157	BSW	E	C	71	🔊
	14	185R14C	102/100	R	5.50	650	188	BSW	E	C	71	🔊
	14	195R14C	106/104	R	5.50	666	198	BSW	E	C	71	🔊
15	195R15C	106/104	R	5.50	693	198	BSW	E	C	71	🔊	

ROYAL BLACK

Royal Black · Royal Enjoy

ROYAL VAN



FEATURES:



→ New tread designed for longer life.

→ Improved tire especially design for commercial purposes, which also provides high mileage.

→ Deep grooves deliver excellent braking on wet surfaces.

← White side wall is popular for customers.

ROYAL VAN



Ride Comfort Anti-chipping Long Mileage

Series	Inch	Size	Load Index	Speed Rating	Rim Width (inch)	OD (mm)	SW (mm)	Sidewall Type	EU TIRE LABEL
75	14	205/75R14C	109/107	R	5.50	664	203	WSW	Professional Off Road
	15	205/75R15C	109/107	R	5.50	689	203	WSW	Professional Off Road
	13	155R13C	85/83	R	4.50	578	157	WSW	Professional Off Road
85	13	155R13C	90/88	R	4.50	578	157	WSW	Professional Off Road
	14	185R14C	102/100	R	5.50	650	188	WSW	Professional Off Road
	14	195R14C	106/104	R	5.50	666	198	WSW	Professional Off Road
	15	185R15C	103/102	R	5.50	674	188	WSW	Professional Off Road
	15	195R15C	106/104	R	5.50	693	198	WSW	Professional Off Road

ROYAL BLACK

Royal Black · Royal Enjoy



ROYAL PRIME



ROYAL PRIME

FEATURES:

Specifically designed for commercial purposes, which requires high mileage and life.

White side wall is popular for customers.



New tread design provides long tread life.

Deep grooves provide excellent braking on wet surfaces, superior water channeling ability and long read life.

Series	Inch	Size	Load Index	Speed Rating	Rim Width (inch)	OD (mm)	SW (mm)	Sidewall Type	EU TIRE LABEL
70	15	P205/70R15	95	S	6.00	669	209	WSW	Professional Off Road
	15	P225/70R15	100	T	6.50	697	228	WSW	Professional Off Road
75	14	P195/75R14	92	S	5.00	648	196	WSW	Professional Off Road
	14	P205/75R14	95	S	5.50	664	203	WSW	Professional Off Road
	15	P205/75R15	97	T	5.50	689	203	WSW	Professional Off Road
	15	P215/75R15	100	T	6.00	703	216	WSW	Professional Off Road
	15	P225/75R15	102	T	6.00	719	223	WSW	Professional Off Road
15	P235/75R15	105	S	6.50	733	235	WSW	Professional Off Road	

ROYAL BLACK

Royal Black · Royal Enjoy

ROYAL COMFORT



FEATURES:



Asymmetric pattern shape, optimized variable pitch pattern design, provide quiet ride environment.



Nice driving pleasure comes from strong tread and soft sidewall.



Perfect handling performance and good cornering performance.



Silica tread compound for low rolling resistance and good wet grip.

ROYAL COMFORT



Series	Inch	Size	Load Index	Speed Rating	Rim Width (inch)	OD (mm)	SW (mm)	Sidewall Type	EU TIRE LABEL			
									RRC	Wet Grip	Noise Value(dB)	Noise Class
55	15	185/55R15	82	V	6.00	585	194	BSW	E	C	68	🔊
	15	195/55R15	85	H/V	6.00	595	201	BSW	E	C	70	🔊
	15	195/55R15	85	V	6.00	595	201	BSW	E	C	69	🔊
	16	205/55R16	91	H/V	6.50	632	214	BSW	E	C	70	🔊
	16	205/55R16	91	H	6.05	632	214	BSW	E	C	69	🔊
	16	215/55R16	93	H	7.00	642	226	BSW	E	C	70	🔊
60	14	185/60R14	82	H	5.50	578	189	BSW	E	C	68	🔊
	14	195/60R14	86	H	6.00	590	201	BSW	E	C	69	🔊
	15	185/60R15	84	H	5.50	603	189	BSW	E	C	68	🔊
	15	195/60R15	88	H/V	6.00	615	201	BSW	E	C	69	🔊
	15	195/60R15	88	V	6.00	615	201	BSW	E	C	69	🔊
	15	205/60R15	91	V	6.00	627	209	BSW	E	C	69	🔊
	15	215/60R15	94	H	6.50	638	218	BSW	E	C	70	🔊
	16	205/60R16	92	V	6.00	652	209	BSW	E	C	69	🔊
	16	215/60R16	95	H	6.50	664	221	BSW	E	C	70	🔊
	16	225/60R16	98	H	6.50	676	228	BSW	E	C	70	🔊
16	235/60R16	100	H	7.00	688	240	BSW	E	C	70	🔊	
65	13	155/65R13	73	T	5.00	540	157	BSW	E	C	68	🔊
	13	165/65R13	77	T	5.00	544	170	BSW	E	C	68	🔊
	14	175/65R14	82	H	5.00	584	177	BSW	E	C	68	🔊
	14	185/65R14	86	H	5.50	609	189	BSW	E	C	68	🔊
	15	175/65R15	84	V	5.00	584	177	BSW	E	C	68	🔊
	15	185/65R15	88	H	5.50	621	189	BSW	E	C	68	🔊
	15	195/65R15	91	V	6.00	635	201	BSW	E	C	69	🔊
	15	205/65R15	94	H	6.00	647	209	BSW	E	C	69	🔊
	15	215/65R15	96	H	6.50	661	221	BSW	E	C	70	🔊
	16	215/65R16	98	H	6.50	686	221	BSW	E	C	70	🔊
70	13	165/70R13	79	T	5.00	562	170	BSW	E	C	68	🔊
	13	175/70R13	82	T	5.00	576	177	BSW	E	C	68	🔊
	13	185/70R13	86	T	5.50	590	189	BSW	E	C	68	🔊
	14	175/70R14	84	H	5.00	602	177	BSW	E	C	68	🔊
	14	185/70R14	88	H	5.50	616	189	BSW	E	C	68	🔊
	14	195/70R14	91	H	6.00	630	201	BSW	E	C	68	🔊
	15	205/70R15	96	H	6.00	669	209	BSW	E	C	68	🔊
	15	215/70R15	98	H	6.50	683	221	BSW	E	C	68	🔊
80	13	165/80R13	83	T	4.50	594	165	BSW	E	C	68	🔊

ROYAL BLACK

Royal Black · Royal Enjoy



ROYAL A/T



Ride Comfort Quiet Water-drainage Handling

↙ The new pattern blocks ensure the driving force on various road surfaces. ↘
 The grooves of big angle increase the three-dimensional appeal and guarantee water evacuation.
 Special sippers design and stiff pattern blocks guarantee outstanding cornering and handling performance.
 ↙ Newly developed compound improves wear, wet grip and other performance. ↘

15-16 >>>

ROYAL A/T

FEATURES:



- Wide center pattern rib ensures excellent steering re-sponse on wet and dry road
- Wide pattern blocks on shoulder improve steering res-ponse
- Four main continuous long itudialn grooves ensure excellent drainage
- Narrow grooves improve the grip property,steering response, braking performance and traction wet,dry and snow condition
- Advanced pattern noise analysis software,optimizes the pattern block pitch arrangement and minimizes noise levels
- Wide tread blocks ensure enough contact area,and improve grip and envelop performance

Series	Inch	Size	Load Index	Speed Rating	Rim Width (inch)	OD (mm)	SW (mm)	Sidewall Type	EU TIRE LABEL			
									RRC	Wet Grip	Noise Value(dB)	Noise Class
55	20	P275/55R20	117	T XL	8.50	810	284	OWL	Professional Off Road			
60	20	P275/60R20	119	T XL	8.00	836	279	OWL	Professional Off Road			
65	17	P235/65R17	104	T	7.00	738	240	OWL	Professional Off Road			
	17	P245/65R17	107	T	7.00	750	248	OWL	Professional Off Road			
	17	P255/65R17	110	T	6.50	724	228	OWL	E	C	72	🔊
	17	P265/65R17	110	T	7.00	776	272	OWL	E	C	72	🔊
	17	P265/65R17	112	T	7.00	776	272	OWL	E	C	72	🔊
	17	P275/65R17	115	T	8.00	791	279	OWL	E	C	72	🔊
18	LT275/65R18	123/120	S	8.00	813	279	OWL	Professional Off Road				
15	215/70R15C	109/107	R	6.50	661	221	OWL	Professional Off Road				
15	255/70R15C	109/107	S	7.50	739	260	OWL	Professional Off Road				
15	P265/70R15	112	T	8.00	753	272	OWL	Professional Off Road				
16	P215/70R16	100	T	6.50	768	221	OWL	Professional Off Road				
16	P215/70R16	99	T	6.50	768	221	OWL	E	C	72	🔊	
16	P215/70R16	100	T	6.50	768	221	RBL	E	C	72	🔊	
16	P225/70R16	101	T	6.50	722	228	OWL	E	C	72	🔊	
16	P225/70R16	103	T	6.50	722	228	OWL	E	C	72	🔊	
16	P235/70R16	104	T	7.00	736	240	OWL	E	C	72	🔊	
16	P235/70R16	106	T	7.00	736	240	OWL	E	C	72	🔊	
70	16	P245/70R16	106	T	7.00	750	248	OWL	E	C	72	🔊
	16	P245/70R16	107	T	7.00	750	248	OWL	E	C	72	🔊
	16	P245/70R16	111	S XL	7.00	750	248	OWL	E	C	72	🔊
	16	P255/70R16	109	T	7.50	764	260	OWL	E	C	72	🔊
	16	P255/70R16	111	T	7.50	764	260	OWL	E	C	72	🔊
	16	P265/70R16	111	T	8.00	778	272	OWL	E	C	72	🔊
	16	P265/70R16	112	T	8.00	778	272	OWL	E	C	72	🔊
	16	P275/70R16	114	T	8.00	792	279	OWL	E	C	72	🔊
	17	P265/70R17	113	T	8.00	804	272	OWL	E	C	72	🔊
	17	P265/70R17	115	T	8.00	804	272	OWL	E	C	72	🔊
17	LT265/70R17	112/118	S	8.00	804	272	OWL	E	C	72	🔊	
18	LT275/70R18	125/122	S	8.00	810	287	OWL	Professional Off Road				
15	P205/75R15	97	T	6.00	669	209	OWL	Professional Off Road				
15	P215/75R15	100	T	6.00	703	216	OWL	Professional Off Road				
15	P225/75R15	102	T	6.00	719	223	OWL	Professional Off Road				
15	P235/75R15	109	S XL	6.50	733	235	OWL	E	C	72	🔊	
75	15	LT235/75R15	104/101	S	6.50	733	233	OWL	E	C	72	🔊
	15	245/75R15C	109/107	S	7.00	749	248	RBL	E	C	72	🔊
	16	LT225/75R16	115/112	S	6.00	744	223	OWL	E	C	72	🔊
	16	LT245/75R16	120/116	S	7.00	744	248	OWL	E	C	72	🔊
	16	LT265/75R16	123/120	S	7.50	804	267	OWL	E	C	72	🔊
	16	LT285/75R16	122/119	S	8.00	834	286	OWL	E	C	72	🔊
	16	185/75R16C	104/102	S	5.00	684	184	RBL	E	C	72	🔊
	17	LT245/75R17	121/118	S	7.00	800	248	OWL	E	C	72	🔊
15	215R15C	112/110	S	6.00	724	218	RBL	E	C	72	🔊	
15	LT31x10.50R15	107	S	8.50	775	268	OWL	E	C	72	🔊	
16	205R16C	110/108	S	5.50	738	200	OWL	E	C	72	🔊	
16	LT215/85R16	115/112	S	6.00	772	216	OWL	E	C	72	🔊	
16	LT235/85R16	120/116	S	6.00	806	235	RBL	E	C	72	🔊	

ROYAL BLACK

Royal Black · Royal Enjoy



ROYAL M/T



Dry/wet Handling Grip Force Anti-chipping Driving

Large aggressive shoulder lugs. Strong protection block on upper shoulder for exceptional bruise, impact, cut resistance and protection from other off-road hazards. Uniquely designed incremental block edge improves clearance of dirt and sand of constant performance. Uniquely designed radius of sub-grooves enhances off-road performance. SRG (Sloped Radius Gradient) block design increase block stiffness, enhances performance, and delivers serious off-road traction. Bar at bottom of groove clears mud and rock particles and provides ultimate off-road traction.



17-18 >>>

ROYAL M/T

FEATURES:

Excellent Self-cleaning Ability Open shoulder pattern pieces ensure excellent self-cleaning ability and high traction of tires on gravel, muddy and other non-paved roads.

Technology of Preventing Stones from being Embedded

Stones are prevented from being embedded in the central and side grooves to avoid external damages to tires and achieve steady operation and control.

Rim Protection Design A special tire protection design is used to avoid damages to the rim.

Shoulder Friction Prevention Line Design The shoulder friction prevention line design improves scratch and punctures resistance and friction resistance performance of tires and improves the driving safety of the tires. With convex character design at sidewalls, such tires are striking, beautiful and fashionable.



Durability Three-layer carcass and strong steel wire belt structure enable tires to have higher skeleton intensity, and provide excellent operation and control performance and durability.



Excellent Off-road Performance Special rough pattern piece design enables tread pattern pieces to stretch into soil, gravel and wet grassland and play a strong grip in muddy and gravel roads and other harsh road conditions, so as to bring more outstanding off-road traction.

Series	Inch	Size	Load Index	Speed Rating	Rim Width (inch)	OD (mm)	SW (mm)	Sidewall Type	EU TIRE LABEL
70	16	LT305/70R16	124/121	Q	9.00	838	310	RBL	Professional Off Road
	17	LT265/70R17	121/118	Q	8.00	804	272	RBL	Professional Off Road
	17	LT285/70R17	126/123	Q	8.50	831	284	RBL	Professional Off Road
75	16	LT245/75R16	120/116	Q	7.00	771	248	RBL	Professional Off Road
	16	LT265/75R16	123/120	Q	7.50	804	267	RBL	Professional Off Road
	16	LT285/75R16	126/123	Q	8.00	834	286	RBL	Professional Off Road
	16	LT315/75R16	127/124	Q	8.50	886	326	RBL	Professional Off Road
	15	LT31*10.50R15	109	Q	8.50	775	268	RBL	Professional Off Road
	15	LT33*12.50R15	108	Q	10.00	838	320	RBL	Professional Off Road
85	15	LT35*12.50R15	113	Q	10.00	890	326	RBL	Professional Off Road
	16	LT235/85R16	120/116	Q	6.50	806	235	RBL	Professional Off Road
	17	LT35*12.50R17	126/123	Q	10.00	890	326	RBL	Professional Off Road
	17	LT33X12.50R17	117	Q	8.50	875	310	RBL	Professional Off Road
	17	LT37X12.50R17	124	Q	8.50	935	317	RBL	Professional Off Road
	18	LT33X12.50R18	118	Q	10.00	838	320	RBL	Professional Off Road
	18	LT35X12.50R18	123	Q	10.00	890	326	RBL	Professional Off Road
	20	LT33X12.50R20	114	Q	10.00	838	320	RBL	Professional Off Road
	20	LT35X12.50R20	121	Q	10.00	890	326	RBL	Professional Off Road
	22	LT35X12.50R22	117	Q	10.00	890	326	RBL	Professional Off Road
22	LT37X12.50R22	123	Q	11.00	940	352	RBL	Professional Off Road	



ROYAL SNOW



FEATURES:

Viabile pattern reduce noise and provides a quiet and comfortable ride.

Three wide grooves improve water evacuation and effectively reduce aquaplaning.

The center pattern rib ensures a superior lateral handling; the sipes on the rib provide comfort ride.



Series	Inch	Size	Load Index	Speed Rating	Rim Width (inch)	OD (mm)	SW (mm)	Sidewall Type	EU TIRE LABEL			
									RRC	Wet Grip	Noise Value(dB)	Noise Class
55	15	185/55R15	86	H XL	6.00	585	194	BSW	E	C	69	🔊
	16	205/55R16	91	H	6.50	632	214	BSW	E	C	69	🔊
	16	205/55R16	94	H XL	6.50	632	214	BSW	E	C	69	🔊
	55	275/55R20	117	H XL	8.50	810	284	BSW	E	C	72	🔊
60	14	165/60R14	75	T	5.00	554	170	BSW	E	C	68	🔊
	15	185/60R15	88	H XL	5.50	603	189	BSW	E	C	69	🔊
	15	195/60R15	88	H	6.00	615	201	BSW	E	C	69	🔊
	16	205/60R16	96	H XL	6.00	652	209	BSW	E	C	69	🔊
	16	215/60R16	99	H XL	6.50	664	221	BSW	E	C	69	🔊
	16	225/60R16	98	H	6.50	676	228	BSW	E	C	69	🔊
	17	215/60R17	96	H	6.50	690	221	BSW	E	C	70	🔊
	17	225/60R17	99	H	6.50	702	228	BSW	E	C	70	🔊
60	275/60R20	119	H XL	8.00	838	279	BSW	E	C	72	🔊	
65	14	155/65R14	75	T	4.50	557	154	BSW	E	C	68	🔊
	14	165/65R14	79	T	5.00	570	170	BSW	E	C	68	🔊
	14	175/65R14	82	T	5.00	584	177	BSW	E	C	68	🔊
	14	185/65R14	86	T	5.50	609	189	BSW	E	C	68	🔊
	15	175/65R15	84	H	5.00	609	177	BSW	E	C	69	🔊
	15	185/65R15	88	H	5.50	621	189	BSW	E	C	69	🔊
	15	205/65R15	94	H	6.00	647	209	BSW	E	C	69	🔊
	15	215/65R15C	104/102	R	6.50	661	221	BSW	E	C	69	🔊
	16	195/65R16C	104/102	R	6.00	660	201	BSW	E	C	69	🔊
	16	205/65R16C	107/105	R	6.00	672	209	BSW	E	C	69	🔊
	16	215/65R16C	109/107	R	6.50	686	221	BSW	E	C	69	🔊
	16	215/65R16	98	H	6.50	686	221	BSW	E	C	69	🔊
	16	225/65R16C	112/110	R	6.50	698	228	BSW	E	C	69	🔊
	16	225/65R16	100	H	6.50	698	228	BSW	E	C	69	🔊
	16	235/65R16C	115/113	R	7.00	712	240	BSW	E	C	69	🔊
	16	235/65R16	103	H	7.00	712	240	BSW	E	C	69	🔊
	17	215/65R17	99	H	6.50	710	221	BSW	E	C	70	🔊
	17	225/65R17	102	T	6.50	724	228	BSW	E	C	70	🔊
17	235/65R17	108	T XL	7.00	738	240	BSW	E	C	70	🔊	
17	245/65R17	111	T XL	7.00	750	248	BSW	E	C	70	🔊	
17	265/65R17	112	T	8.00	776	272	BSW	E	C	70	🔊	
18	LT275/65R18	123/120	S	8.00	789	286	BSW	E	C	72	🔊	
70	13	175/70R13	82	T	5.00	576	177	BSW	E	C	68	🔊
	14	165/70R14	85	T XL	5.00	588	170	BSW	E	C	68	🔊
	14	175/70R14	88	T XL	5.00	602	177	BSW	E	C	68	🔊
	14	185/70R14	92	T XL	5.50	616	189	BSW	E	C	68	🔊
	14	195/70R14	95	T XL	6.00	630	201	BSW	E	C	68	🔊
	15	195/70R15C	104/102	R	6.00	655	201	BSW	E	C	69	🔊
	15	215/70R15C	109/107	R	6.50	683	221	BSW	E	C	69	🔊
	15	215/70R15	98	T	6.50	683	221	BSW	E	C	69	🔊
	15	225/70R15C	112/110	R	6.50	697	228	BSW	E	C	69	🔊
	16	215/70R16	100	T	6.50	708	217	BSW	E	C	69	🔊
	16	225/70R16	107	T XL	6.50	722	228	BSW	E	C	69	🔊
	16	235/70R16	106	T	7.00	736	240	BSW	E	C	69	🔊
16	245/70R16	111	T XL	7.00	750	248	BSW	E	C	69	🔊	
16	265/70R16	112	T	8.00	778	272	BSW	E	C	69	🔊	
17	265/70R17	115	T	8.00	804	272	BSW	E	C	70	🔊	
17	LT245/70R17	119/116	S	8.00	804	257	BSW	E	C	72	🔊	
17	LT265/70R17	121/118	S	8.00	804	272	BSW	E	C	72	🔊	
18	LT275/70R18	125/122	S	8.00	810	287	BSW	E	C	72	🔊	
75	16	LT225/75R16C	115/112	S	6.00	744	223	BSW	E	C	69	🔊
	16	LT245/75R16C	120/116	S	7.00	774	248	BSW	E	C	69	🔊
	16	185/75R16C	104/102	R	5.00	684	184	BSW	E	C	69	🔊
	16	195/75R16C	107/105	R	5.50	698	196	BSW	E	C	69	🔊
16	215/75R16C	113/111	R	6.00	728	216	BSW	E	C	69	🔊	

ROYAL BLACK

Royal Black · Royal Enjoy



ROYAL WINTER



ROYAL WINTER

FEATURES:

Enhance ice surface performance-cellular rubber with silica compound and micro-pumps on tread blocks have function of absorbing water from ice surface,eliminating slippery factor and improving grip.

New innovation design of tread sipers-full 3D zigzag shaped sipes enhance rigidity of tread blocks and thus help to maximum contact patch and to minimize shape twist of grooves for better water/slush evacuation.

9 different tread block shapes are used to decrease noise.



Center rib design feature empty pitches, with long and narrow following wide and short-improving accelerating traction and reducing noise,and S-shaped sipe to enhance accelerating traction.

Wide circumferential and lateral grooves designed to evacuate water and slush efficiently!

Shoulder blocks feature W-shaped micro-grooves which increase responsiveness of tyre while cornering,also being an addition to decorative pattern of shoulder outer wall.

Series	Inch	Size	Load Index	Speed Rating	Rim Width (inch)	OD (mm)	SW (mm)	Sidewall Type	EU TIRE LABEL			
									RRC	Wet Grip	Noise Value(dB)	Noise Class
40	18	225/40R18	92	H XL	9.00	661	263	BSW	E	C	71	4
	20	275/40R20	106	H XL	9.50	728	278	BSW	E	C	72	4
	17	225/45R17	94	H XL	7.50	634	225	BSW	E	C	70	4
45	17	235/45R17	97	H XL	7.50	644	236	BSW	E	C	70	4
	18	225/45R18	95	H XL	7.50	659	225	BSW	E	C	72	4
	18	235/45R18	98	H XL	8.00	667	240	BSW	E	C	72	4
	18	245/45R18	100	H XL	8.00	677	243	BSW	E	C	71	4
	19	245/45R19	102	H XL	8.00	703	243	BSW	E	C	72	4
	20	275/45R20	110	H XL	9.00	756	273	BSW	E	C	72	4
50	15	195/50R15	82	H	6.00	577	201	BSW	E	C	69	4
	17	205/50R17	93	H XL	6.50	638	214	BSW	E	C	70	4
	17	215/50R17	95	H XL	7.50	719	245	BSW	E	C	70	4
	17	225/50R17	98	H XL	8.00	739	265	BSW	E	C	70	4
	19	255/50R19	107	H XL	8.00	739	265	BSW	E	C	71	4
	15	195/55R15	85	H	6.00	595	201	BSW	E	C	69	4
55	16	195/55R16	91	H XL	6.00	619	190	BSW	E	C	69	4
	16	205/55R16	91	H	6.50	632	214	BSW	E	C	69	4
	16	205/55R16	94	H XL	6.50	632	214	BSW	E	C	69	4
	16	215/55R16	97	H XL	7.00	642	226	BSW	E	C	69	4
	16	225/55R16	99	H XL	7.00	680	233	BSW	E	C	69	4
	17	215/55R17	98	H XL	7.00	668	226	BSW	E	C	70	4
	17	225/55R17	101	H XL	7.00	680	233	BSW	E	C	70	4
	17	235/55R17	103	H XL	7.50	690	245	BSW	E	C	70	4
	18	235/55R18	104	H XL	7.50	715	245	BSW	E	C	71	4
60	18	255/55R18	109	H XL	8.00	737	265	BSW	E	C	71	4
	19	235/55R19	105	H XL	7.50	741	245	BSW	E	C	72	4
	19	255/55R19	111	H XL	8.00	763	265	BSW	E	C	71	4
	14	185/60R14	82	T	5.50	578	189	BSW	E	C	69	4
	15	195/60R15	88	H	6.00	615	201	BSW	E	C	69	4
	18	235/60R18	107	H XL	7.00	739	240	BSW	E	C	71	4
65	18	245/60R18	105	H	7.00	751	254	BSW	E	C	71	4
	15	195/65R15	91	T	6.00	635	201	BSW	E	C	69	4
	15	195/65R15	91	H	6.00	635	201	BSW	E	C	69	4
15	195/65R15	95	T XL	6.00	635	201	BSW	E	C	69	4	
70	13	165/70R13	79	T	5.00	562	170	BSW	E	C	68	4

ROYAL BLACK

Royal Black · Royal Enjoy



ROYAL A/S

FEATURES:

The compound mixture ensures longevity without compromising on safety and performance.

This unique design offers stability in cornering, it has superior performance due to its superior design, where the Royal A/S provided performance as an all-rounder tyre, the Royal A/S provides superior performance in cornering on slippery conditions.



This design has a superior pitch frequency, which offers a considerable reduction in noise, offering a very comfortable and quiet ride.

Superior high tensile steel belts for durability, nylon blend cap to maximize the contact area with the road surface, all of these combined exceeds the goal of having a tyre which not only meets the needs of an exceptional all seasons tyre, but also provides exceptional performance."

ROYAL A/S



Series	Inch	Size	Load Index	Speed Rating	Rim Width (inch)	OD (mm)	SW (mm)	Sidewall Type	EU TIRE LABEL			
									RRC	Wet Grip	Noise Value(dB)	Noise Class
45	17	225/45R17	94	W XL	7.50	634	225	BSW	E	C	72	4
	15	195/50R15	82V	V	6.00	577	201	BSW	E	C	72	4
50	17	225/50R17	98	W XL	8.00	658	233	BSW	E	C	72	4
	15	175/55R15	77	H	5.50	573	182	BSW	E	C	72	4
	15	185/55R15	82	V	6.00	585	194	BSW	E	C	72	4
55	15	195/55R15	85	V	6.00	595	201	BSW	E	C	72	4
	16	195/55R16	91	V XL	6.00	619	190	BSW	E	C	72	4
	16	205/55R16	94	V XL	6.50	632	214	BSW	E	C	72	4
	16	215/55R16	97	V XL	7.00	642	226	BSW	E	C	72	4
60	14	165/60R14	75H	H	5.00	554	170	BSW	E	C	72	4
	14	185/60R14	82H	H	5.50	578	189	BSW	E	C	72	4
	15	175/60R15	81H	H	5.00	591	177	BSW	E	C	72	4
	15	185/60R15	88	H XL	5.50	603	189	BSW	E	C	72	4
	15	195/60R15	88	H	6.00	615	201	BSW	E	C	72	4
	16	205/60R16	96	H XL	6.00	652	209	BSW	E	C	72	4
65	16	215/60R16	99	H XL	6.50	664	221	BSW	E	C	72	4
	13	155/65R13	73	T	5.00	540	157	BSW	E	C	72	4
	14	155/65R14	75	H	4.50	557	154	BSW	E	C	72	4
	14	165/65R14	79	H	5.00	570	170	BSW	E	C	72	4
	14	175/65R14	82	H	5.00	584	177	BSW	E	C	72	4
	14	185/65R14	86	H	5.50	609	189	BSW	E	C	72	4
	15	175/65R15	84	H	5.00	609	177	BSW	E	C	72	4
	15	185/65R15	88	H	5.50	621	189	BSW	E	C	72	4
70	15	195/65R15	91	H	6.00	635	201	BSW	E	C	72	4
	16	215/65R16	102	H XL	6.50	686	221	BSW	E	C	72	4
	13	155/70R13	75	T	4.50	548	157	BSW	E	C	72	4
	13	165/70R13	79	T	5.00	562	170	BSW	E	C	72	4
	14	165/70R14	81	H	5.00	588	170	BSW	E	C	72	4
80	14	175/70R14	84	H	5.00	602	177	BSW	E	C	72	4
	13	155/80R13	79	T	4.50	578	157	BSW	E	C	72	4

ROYAL BLACK

Royal Black · Royal Enjoy



ROYAL GP1 00



29-30 >>>

ROYAL GP1 00

FEATURES:

Four circumferential tread grooves, excellent water drainage, improving wet handling.

Special grooves design to bring the superior quiet effect.



Continuous and wide shoulder block design maintains the stability at cornering and brings precise driving experience.

Special wear-resisting tread compound to provide excellent trip mileage.

Series	Inch	Size	Load Index	Speed Rating	Rim Width (inch)	OD (mm)	SW (mm)	Sidewall Type	EU TIRE LABEL			
									RRC	Wet Grip	Noise Value(dB)	Noise Class
55	55	175/55R15	77	H	5.50	573	182	BSW	E	C	68	🔊
	55	185/55R15	82	V	6.00	585	194	BSW	E	C	68	🔊
	16	205/55R16	91V	V	6.50	632	214	BSW	E	C	69	🔊
	16	215/55R16	93	H	7.00	642	226	BSW	E	C	70	🔊
	13	175/60R13	77	H	5.00	540	177	BSW	E	C	68	🔊
60	14	165/60R14	75	H	5.00	554	170	BSW	E	C	68	🔊
	14	185/60R14	82	H	5.50	578	189	BSW	E	C	68	🔊
	14	195/60R14	86	H	6.00	590	201	BSW	E	C	69	🔊
	14	205/60R14	88	H	6.00	602	209	BSW	E	C	69	🔊
	15	175/60R15	81	H	5.00	591	177	BSW	E	C	68	🔊
	15	185/60R15	84	H	5.50	603	189	BSW	E	C	68	🔊
	15	195/60R15	88	V	6.00	615	201	BSW	E	C	69	🔊
	15	205/60R15	91	V	6.00	627	209	BSW	E	C	69	🔊
	15	215/60R15	94	H	6.50	639	221	BSW	E	C	70	🔊
	16	205/60R16	92	V	6J	652	209	BSW	E	C	69	🔊
65	16	215/60R16	95	V	6.00	664	221	BSW	E	C	70	🔊
	16	225/60R16	98	H	6.50	676	228	BSW	E	C	70	🔊
	16	235/60R16	100	H	7.00	688	240	BSW	E	C	70	🔊
	13	155/65R13	73	T	4.50	532	157	BSW	E	C	68	🔊
	13	165/65R13	77	T	5.00	544	170	BSW	E	C	68	🔊
	14	155/65R14	75	H	4.50	558	157	BSW	E	C	68	🔊
	14	165/65R14	79	H	5.00	570	170	BSW	E	C	68	🔊
	14	175/65R14	82	H	5.00	584	177	BSW	E	C	68	🔊
	14	185/65R14	86	H	5.50	596	189	BSW	E	C	68	🔊
	15	175/65R15	84	H	5.00	609	177	BSW	E	C	68	🔊
	15	185/65R15	88	H	5.50	621	189	BSW	E	C	68	🔊
	15	195/65R15	91	V	6.00	635	201	BSW	E	C	69	🔊
	15	205/65R15	94	V	6.00	647	209	BSW	E	C	69	🔊
15	215/65R15	96	H	6.50	661	221	BSW	E	C	70	🔊	
16	215/65R16	98	H	6.50	686	221	BSW	E	C	70	🔊	
70	12	145/70R12	69	T	4.50	509	150	BSW	E	C	70	🔊
	12	155/70R12	73	T	4.50	523	157	BSW	E	C	70	🔊
	13	155/70R13	75	T	4.50	548	157	BSW	E	C	68	🔊
	13	165/70R13	79	T	5.00	562	170	BSW	E	C	68	🔊
	13	175/70R13	82	T	5.00	576	177	BSW	E	C	68	🔊
	13	185/70R13	86	T	5.50	590	189	BSW	E	C	68	🔊
	14	165/70R14	81	H	5.00	588	170	BSW	E	C	68	🔊
	14	175/70R14	84	H	5.00	602	177	BSW	E	C	68	🔊
	14	185/70R14	88	H	5.50	616	189	BSW	E	C	68	🔊
	14	195/70R14	91	H	6.00	630	201	BSW	E	C	69	🔊
	14	205/70R14	95	H	6.00	644	209	BSW	E	C	69	🔊
	14	215/70R14	96	H	6.50	658	221	BSW	E	C	70	🔊
	15	205/70R15	96	H	6.00	669	209	BSW	E	C	69	🔊
	15	215/70R15	98	H	6.50	683	221	BSW	E	C	70	🔊
	15	225/70R15	100	H	6.50	697	228	BSW	E	C	70	🔊
80	13	155/80R13	79	T	4.50	578	157	BSW	E	C	68	🔊
	13	165/80R13	83	T	4.50	594	165	BSW	E	C	68	🔊

ROYAL BLACK 4

Royal Black · Royal Enjoy



ROYAL M/T II

FEATURES:

Off-Road Maximum Traction Tyre, designed for extreme 4X4 application, confidence in performance on muddy, snowy and rocky terrain as well as sealed road performance with extra ground clearance, higher load-carrying capacity, and greater ability to go off-road. 4X4 enthusiasts know it for its long wear, low noise and aggressive tread pattern.



Strategically placed ribs within the lateral grooves of the tread design help to discharge stones and resist stone drilling.

Specially developed tread compound helps resist the cutting, tearing and chunking commonly developed in extended off-road applications. Strategically placed in the lower side wall area, a raised rim protector helps protect the wheel and tyre from hazards in off-road driving conditions

ROYAL M/T II



Series	Inch	Size	Load Index	Speed Rating	Rim Width (inch)	OD (mm)	SW (mm)	Sidewall Type	EU TIRE LABEL
85	20	LT33X12.50R20	114	Q	10.00	838	320	RBL	Professional Off Road
	20	LT35X12.50R20	121	Q	10.00	890	326	RBL	Professional Off Road
	22	LT35X12.50R22	117	Q	10.00	890	326	RBL	Professional Off Road
	22	LT37X12.50R22	123	Q	11.00	940	352	RBL	Professional Off Road

ROYAL BLACK

Royal Black · Royal Enjoy



ROYAL STUD



ROYAL STUD

FEATURES:

Ideal for conditions in the region which does not require extreme snow tyres and more performance is required.

This unique tread design also features a proven modular tread block geometry which offer a level of grip and performance which is unique in its class.



A Directional tyre that offers fantastic water dispersion and exceptional grip thanks to its unique features which includes an excessive number of sipes allowing the tread to conform to the road surface, and its extra wide channels that excavates fluids in preposition to the pressure and weight of the vehicle and road requirements.

Series	Inch	Size	Load Index	Speed Rating	Rim Width (inch)	OD (mm)	SW (mm)	Sidewall Type	EU TIRE LABEL			
									RRC	Wet Grip	Noise Value(dB)	Noise Class
45	17	225/45R17	94	H XL	7.50	634	225	BSW	E	C	72	8-1
50	17	225/50R17	98	H XL	8.00	658	233	BSW	E	C	72	8-1
55	16	205/55R16	94	T XL	6.50	632	214	BSW	E	C	72	8-1
	17	215/55R17	98	H XL	7.00	668	226	BSW	E	C	72	8-1
60	17	225/55R17	101	H XL	7.00	680	233	BSW	E	C	72	8-1
	15	185/60R15	88	T XL	5.50	603	189	BSW	E	C	72	8-1
	15	195/60R15	92	T XL	6.00	615	201	BSW	E	C	72	8-1
	16	205/60R16	96	T XL	6.00	652	209	BSW	E	C	72	8-1
65	16	215/60R16	99	T XL	6.50	664	221	BSW	E	C	72	8-1
	17	215/60R17	100	H XL	6.50	680	221	BSW	E	C	72	8-1
	16	225/60R16	102	T XL	6.50	676	228	BSW	E	C	72	8-1
	17	225/60R17	103	H XL	6.50	702	228	BSW	E	C	72	8-1
70	14	175/65R14	86	T XL	5.00	584	177	BSW	E	C	72	8-1
	14	185/65R14	90	T XL	5.50	609	189	BSW	E	C	72	8-1
	15	185/65R15	92	T XL	5.50	621	189	BSW	E	C	72	8-1
	15	195/65R15	95	T XL	6.00	635	201	BSW	E	C	72	8-1
	16	215/65R16	102	T XL	6.50	686	221	BSW	E	C	72	8-1
	16	225/65R16	104	T XL	6.50	698	228	BSW	E	C	72	8-1
	16	235/65R16C	115/113	R	7.00	712	240	BSW	E	C	72	8-1
	17	225/65R17	106	T XL	6.50	724	228	BSW	E	C	72	8-1
75	17	235/65R17	108	T XL	7.00	738	240	BSW	E	C	72	8-1
	17	245/65R17	111	T XL	7.00	750	248	BSW	E	C	72	8-1
	16	215/70R16	100	T	6.50	708	217	BSW	E	C	72	8-1
	16	235/70R16	106	T	7.00	736	240	BSW	E	C	72	8-1
75	17	LT245/70R17	119/116	S	7.00	776	248	BSW	E	C	72	8-1
	17	265/70R17	115/112	T	8.00	804	272	BSW	E	C	72	8-1
	17	LT265/70R17	121/118	S	8.00	804	272	BSW	E	C	72	8-1
75	16	185/75R16C	104/102	R	5.00	684	184	BSW	E	C	72	8-1
	16	LT225/75R16	115/112	S	6.00	744	223	BSW	E	C	72	8-1
75	16	LT245/75R16	120/116	S	7.00	744	248	BSW	E	C	72	8-1

A close-up, black and white photograph of the front of a truck. The focus is on the grille, which has a 'P 380' badge on it. To the left, a headlight is visible, protected by a metal cage. The truck's hood and windshield are also visible in the upper part of the frame.

ROYAL BLACK
TRUCK AND BUS TIRES

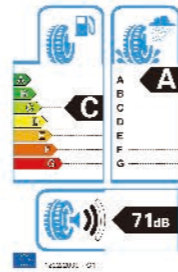
TABLE OF CONTENTS

31-32 RBK01/RBK02/RBK76/RBK05
33-34 RBK06/RBK08/RBK11/RBK12
35-36 RBK20/RBK68/RBK75/RBK81
37-38 RBK82/RBK88/RBK96/RBK97
39-40 RBK98/RBK66



PATTERN:RBK01

- ★ Typical combined pattern
- ★ Suitable for trucks of different tonnages which run on highway and normal road
- ★ Good handling
- ★ Strong wear resistance, low heat generation



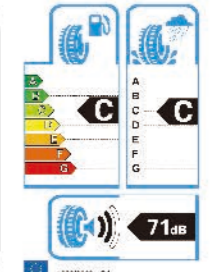
Standard wheel Permitted wheel Prohibit wheel

Size Description	Ply Rating	Load Index	Speed Rating	Standard Rim(Inch)	Tread Depth(MM)	Section Width(MM)	OA.Diameter(MM)	Max.Pressur(KPA/PSI)
315/80R22.5	20	156/150	M	9.00	15.0	312	1076	850/123
13R22.5	18	154/151	L	9.75	15.0	320	1124	830/120
12.00R24	20	160/157	K	8.50	16.0	315	1226	900/131
9.00R20	16	144/142	K	7.00	15.0	259	1019	900/131
10.00R20	18	149/146	K	7.50	16.0	278	1054	930/135
11.00R20	18	152/149	K	8.00	16.5	293	1085	930/135
12.00R20	20	156/153	K	8.50	17.5	315	1125	900/131
12R22.5	18	152/149	M	9.00	15.0	300	1084	930/135
295/80R22.5	18	152/149	M	9.00	15.0	298	1044	900/131
11R22.5	16	146/143	M	8.25	14.5	279	1050	830/120



PATTERN:RBK76

- ★ Suitable for trucks of different tonnages which run on highway
- ★ Low fuel consumption



Standard wheel Permitted wheel Prohibit wheel

Size Description	Ply Rating	Load Index	Speed Rating	Standard Rim(Inch)	Tread Depth(MM)	Section Width(MM)	OA.Diameter(MM)	Max.Pressur(KPA/PSI)
385/65R22.5	20	160	L	11.75	15.5	389	1072	900/131
425/65R22.5	20	165	K	13.00	16.0	430	1124	830/120



PATTERN:RBK02

- ★ Open grooves to maximize self-cleaning
- ★ Stone ejectors protect tire from stone drilling
- ★ Deep tread pattern for excellent traction and long tread life



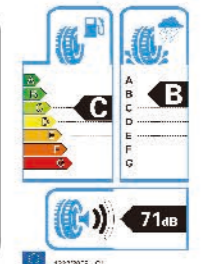
Standard wheel Permitted wheel Prohibit wheel

Size Description	Ply Rating	Load Index	Speed Rating	Standard Rim(Inch)	Tread Depth(MM)	Section Width(MM)	OA.Diameter(MM)	Max.Pressur(KPA/PSI)
1200R24	20	160/157	K	8.50	16.0	315	1226	900/131
11.00R20	18	152/149	K	8.00	16.5	293	1085	930/135
10.00R20	18	149/146	K	7.50	16.0	278	1054	930/135
12.00R20	20	156/153	K	8.50	17.5	315	1125	930/135



PATTERN:RBK05

- ★ Suitable for expressway, normal highway long transportation to be used all wheel position
- ★ Three longitudinal pattern groove and transverse shallow groove to provide driver and manipulative performance
- ★ High strength cap design and tire body design improve blasting, ensure tire safe driving



Standard wheel Permitted wheel Prohibit wheel

Size Description	Ply Rating	Load Index	Speed Rating	Standard Rim(Inch)	Tread Depth(MM)	Section Width(MM)	OA.Diameter(MM)	Max.Pressur(KPA/PSI)
11R22.5	16	146/143	M	8.25	14.5	279	1050	830/120
12R22.5	18	152/149	M	9.00	15.0	300	1084	930/135
295/80R22.5	16	146/143	M	9.00	15.0	298	1014	830/120
315/80R22.5	20	156/150	M	9.00	15.0	312	1076	850/123



PATTERN:RBK06

- ★ Suitable for drive and steer axle of trucks riding on highway
- ★ Long life
- ★ Good grip performance
- ★ Low eccentric wear



○ Standard wheel ○ Permitted wheel ✗ Prohibit wheel

Size Description	Ply Rating	Load Index	Speed Rating	Standard Rim(Inch)	Tread Depth(MM)	Section Width(MM)	OA.Diameter(MM)	Max.Pressur(KPA/PSI)
11R22.5	16	146/143	M	8.25	14.5	279	1050	830/120
11R22.5	16	149/146	M	8.25	14.5	279	1104	830/120
295/75R22.5	18	152/149	M	9.00	14.5	298	1044	830/120
315/80R22.5	20	156/150	M	9.00	15.0	312	1076	850/123
315/70R22.5	20	154/150	M	9.00	15.0	312	1014	900/131
385/65R22.5	20	160	L	11.75	14.5	389	1072	900/131
385/55R22.5	20	160	L	12.25	14.5	389	1072	900/131



PATTERN:RBK08

- ★ Open grooves to maximize self-cleaning
- ★ Stone ejectors protect tire from stone drilling
- ★ Deep tread pattern for excellent traction and long tread life



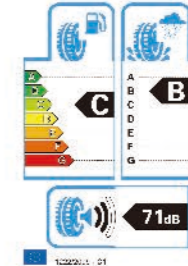
○ Standard wheel ○ Permitted wheel ✗ Prohibit wheel

Size Description	Ply Rating	Load Index	Speed Rating	Standard Rim(Inch)	Tread Depth(MM)	Section Width(MM)	OA.Diameter(MM)	Max.Pressur(KPA/PSI)
1200R24	20	160/157	K	8.50	16	315	1226	900/131



PATTERN:RBK11

- ★ Suitable for drive and steer axle of trucks riding on highway
- ★ Long life
- ★ Retreadability
- ★ Low eccentric wear



○ Standard wheel ○ Permitted wheel ✗ Prohibit wheel

Size Description	Ply Rating	Load Index	Speed Rating	Standard Rim(Inch)	Tread Depth(MM)	Section Width(MM)	OA.Diameter(MM)	Max.Pressur(KPA/PSI)
11R22.5	16	146/143	M	8.25	14.5	279	1050	830/120
11R24.5	16	149/146	M	8.25	14.5	279	1104	830/120
295/80R22.5	16	146/143	M	9.00	15.0	298	1014	830/120
295/75R22.5	18	152/149	M	9.00	14.5	298	1044	830/120
315/80R22.5	20	156/150	M	9.00	15.0	312	1076	850/123
315/70R22.5	20	154/150	M	9.00	15.0	312	1014	900/131
385/65R22.5	20	160	L	11.75	14.5	389	1072	900/131
385/55R22.5	20	160	L	12.25	14.5	389	1072	900/131
12R22.5	18	152/149	M	9.00	15.0	300	1084	930/135
205/75R17.5	14	124/122	M	6.00	12.0	212	749	760/110
215/75R17.5	14	135/133	J	6.00	12.0	222	761	860/125
225/75R17.5	16	129/127	M	6.75	12.0	222	776	830/120
235/75R17.5	16	143/141	J	6.75	12.5	242	792	875/127
245/75R17.5	16	143/141	J	7.50	12.5	249	781	900/131
225/70R19.5	14	128/126	M	6.75	12.5	225	804	870/126
245/70R19.5	16	143/141	J	7.50	12.5	249	832	875/127
265/70R19.5	16	143/141	J	7.50	13.5	259	866	850/123
285/70R19.5	16	150/148	J	8.25	13.5	287	888	900/131
275/70R22.5	16	148/145	M	8.25	14.0	276	958	900/131



PATTERN:RBK12

- ★ Solid shoulder resists irregular wear and curb damage
- ★ Wide rib design for stability
- ★ Shallow tread designed to reduce rolling resistance for improved fuel economy
- ★ Multi-sipes to improve wet traction



○ Standard wheel ○ Permitted wheel ✗ Prohibit wheel

Size Description	Ply Rating	Load Index	Speed Rating	Standard Rim(Inch)	Tread Depth(MM)	Section Width(MM)	OA.Diameter(MM)	Max.Pressur(KPA/PSI)
11R22.5	16	146/143	M	8.25	14.5	279	1050	830/120
11R24.5	16	149/146	M	8.25	14.5	279	1104	830/120
295/75R22.5	18	152/149	M	9.00	14.5	298	1044	830/120



PATTERN:RBK20

- ★ Suitable for all position of light and medium trucks running on highway
- ★ Good handing and high-speed performance
- ★ Low rolling resistance



○ Standard wheel ○ Permitted wheel ✗ Prohibit wheel

Size Description	Ply Rating	Load Index	Speed Rating	Standard Rim(Inch)	Tread Depth(MM)	Section Width(MM)	OA.Diameter(MM)	Max.Pressur(KPA/PSI)
11R20	18	152/149	G	8.00	21.0	293	1085	930/135



PATTERN:RBK75

- ★ Suitable for trucks of different tonnages which run on highway
- ★ Low fuel consumption



○ Standard wheel ○ Permitted wheel ✗ Prohibit wheel

Size Description	Ply Rating	Load Index	Speed Rating	Standard Rim(Inch)	Tread Depth(MM)	Section Width(MM)	OA.Diameter(MM)	Max.Pressur(KPA/PSI)
385/65R22.5	20	160	L	11.75	15.5	389	1072	900/131
425/65R22.5	20	165	K	11.00	16.0	430	1124	830/120



PATTERN:RBK68

- ★ Good traction
- ★ Chip,cut and abrasion resistance tread compound
- ★ Deep tread depth increases mileage and service life



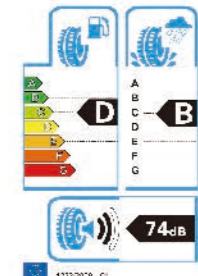
○ Standard wheel ○ Permitted wheel ✗ Prohibit wheel

Size Description	Ply Rating	Load Index	Speed Rating	Standard Rim(Inch)	Tread Depth(MM)	Section Width(MM)	OA.Diameter(MM)	Max.Pressur(KPA/PSI)
9.00R20	16	144/142	G	7.00	21.0	259	1019	900/131
10.00R20	18	149/146	G	7.50	21.0	278	1054	930/135
11.00R20	18	152/149	J	8.00	19.0	293	1085	930/135
12.00R20	20	156/153	J	8.50	19.0	315	1125	930/135



PATTERN:RBK81

- ★ Perfect drive tire for regional applications
- ★ Wide tread lugs improve traction,wear&handling
- ★ Extra strong casing design for enhanced durability
- ★ Deep tread pattern for excellent traction and long tread life



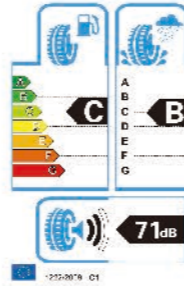
○ Standard wheel ○ Permitted wheel ✗ Prohibit wheel

Size Description	Ply Rating	Load Index	Speed Rating	Standard Rim(Inch)	Tread Depth(MM)	Section Width(MM)	OA.Diameter(MM)	Max.Pressur(KPA/PSI)
295/80R22.5	16	146/143	L	9.00	20.0	298	1014	830/120
315/80R22.5	20	156/150	L	9.00	20.0	312	1076	850/123
315/70R22.5	18	154/150	L	9.00	20.0	312	1014	850/123
φ12R22.5	18	152/149	K	9.00	20.0	300	1084	930/135
11R24.5	16	149/146	K	8.25	20.0	279	1101	830/120
295/75R22.5	18	152/149	K	9.00	20.0	298	1044	830/120
9.00R20	16	144/142	K	7.00	18.0	259	1019	900/131
10.00R20	18	149/146	K	7.50	20.0	278	1054	930/135
φ11R22.5	16	146/143	K	8.25	20.0	279	1050	830/120
205/75R17.5	14	124/122	M	6.00	15.0	212	753	760/110
215/75R17.5	14	126/124	M	6.00	15.0	222	765	860/125
225/75R17.5	16	129/127	M	6.75	15.0	222	782	830/120
235/75R17.5	16	132/130	M	6.75	15.0	242	797	875/127
245/70R17.5	16	136/134	M	7.50	15.0	249	787	900/131
225/70R19.5	14	128/126	M	6.75	15.0	249	807	870/126
245/70R19.5	16	136/134	M	7.50	16.0	249	838	875/127
265/70R19.5	16	140/138	M	7.50	16.0	259	869	850/123
285/70R19.5	16	146/144	M	8.25	16.0	287	893	900/131
275/70R22.5	16	148/145	M	8.25	20.0	276	958	900/131



PATTERN:RBK82

- ★ Unique tire bead design enhances tire durability
- ★ Special pattern design improved tire shoulder wear resistance
- ★ Unique tread groove design promotes self-cleaning characteristics of tires
- ★ Solid tread blocks designed specifically for provided outstanding traction



Standard wheel Permitted wheel Prohibit wheel

Size Description	Ply Rating	Load Index	Speed Rating	Standard Rim(Inch)	Tread Depth(MM)	Section Width(MM)	OA.Diameter(MM)	Max.Pressur(KPA/PSI)
315/80R22.5	20	156/150	G	9.00	20.0	312	1076	850/123
13R22.5	20	156/150	G	9.75	15.0	320	1124	875/127
φ 11R22.5	16	146/143	K	8.25	20.0	279	1050	830/120
φ 295/80R22.5	18	152/149	K	9.00	20.0	298	1014	830/120
12R22.5	18	152/149	K	9.00	18.0	300	1084	930/135



PATTERN:RBK96

- ★ Aggressive tread design for metro applications
- ★ Integrated tie bars reduce irregular wear and promote increased stability
- ★ All weather tread design
- ★ Angled lug and siping design improve overall traction and wet grip



Standard wheel Permitted wheel Prohibit wheel

Size Description	Ply Rating	Load Index	Speed Rating	Standard Rim(Inch)	Tread Depth(MM)	Section Width(MM)	OA.Diameter(MM)	Max.Pressur(KPA/PSI)
315/80R22.5	20	156/150	K	9.00	18.0	312	1076	850/123
12R22.5	18	152/149	K	9.00	18.0	300	1084	930/135
295/80R22.5	18	146/143	L	9.00	20.0	298	1014	830/120



PATTERN:RBK88

- ★ Perfect drive tire for regional applications
- ★ Wide tread lugs improve traction,wear&handing
- ★ Shoulder tie-bars reduce irregular wear
- ★ Extra strong casing design for enhanced durability



Standard wheel Permitted wheel Prohibit wheel

Size Description	Ply Rating	Load Index	Speed Rating	Standard Rim(Inch)	Tread Depth(MM)	Section Width(MM)	OA.Diameter(MM)	Max.Pressur(KPA/PSI)
11R22.5	16	146/143	K	8.25	20.0	279	1050	830/120
11R24.5	16	149/146	K	8.25	20.0	279	1104	830/120
295/75R22.5	16	146/143	K	9.00	20.0	298	1044	830/120



PATTERN:RBK97

- ★ Unique tire bead design enhances tire durability
- ★ Unique tread groove design promotes self-cleaning characteristics of tires
- ★ Solid tread blocks designed specifically for provided outstanding traction
- ★ Special pattern design improved tire should wear resistance



Standard wheel Permitted wheel Prohibit wheel

Size Description	Ply Rating	Load Index	Speed Rating	Standard Rim(Inch)	Tread Depth(MM)	Section Width(MM)	OA.Diameter(MM)	Max.Pressur(KPA/PSI)
315/80R22.5	20	156/150	K	9.00	18.0	312	1076	850/123



PATTERN:RBK98

- ★ Unique tire bead design enhances tire durability
- ★ Unique tread groove design promotes self-cleaning characteristics of tires



○ Standard wheel ○ Permitted wheel ✗ Prohibit wheel

Size Description	Ply Rating	Load Index	Speed Rating	Standard Rim(Inch)	Tread Depth(MM)	Section Width(MM)	OA.Diameter(MM)	Max.Pressur(KPA/PSI)
315/80R22.5	20	156/150	K	9.00	18.0	312	1076	850/123
12R22.5	18	152/149	K	9.00	18.0	300	1084	930/135



PATTERN:RBK66

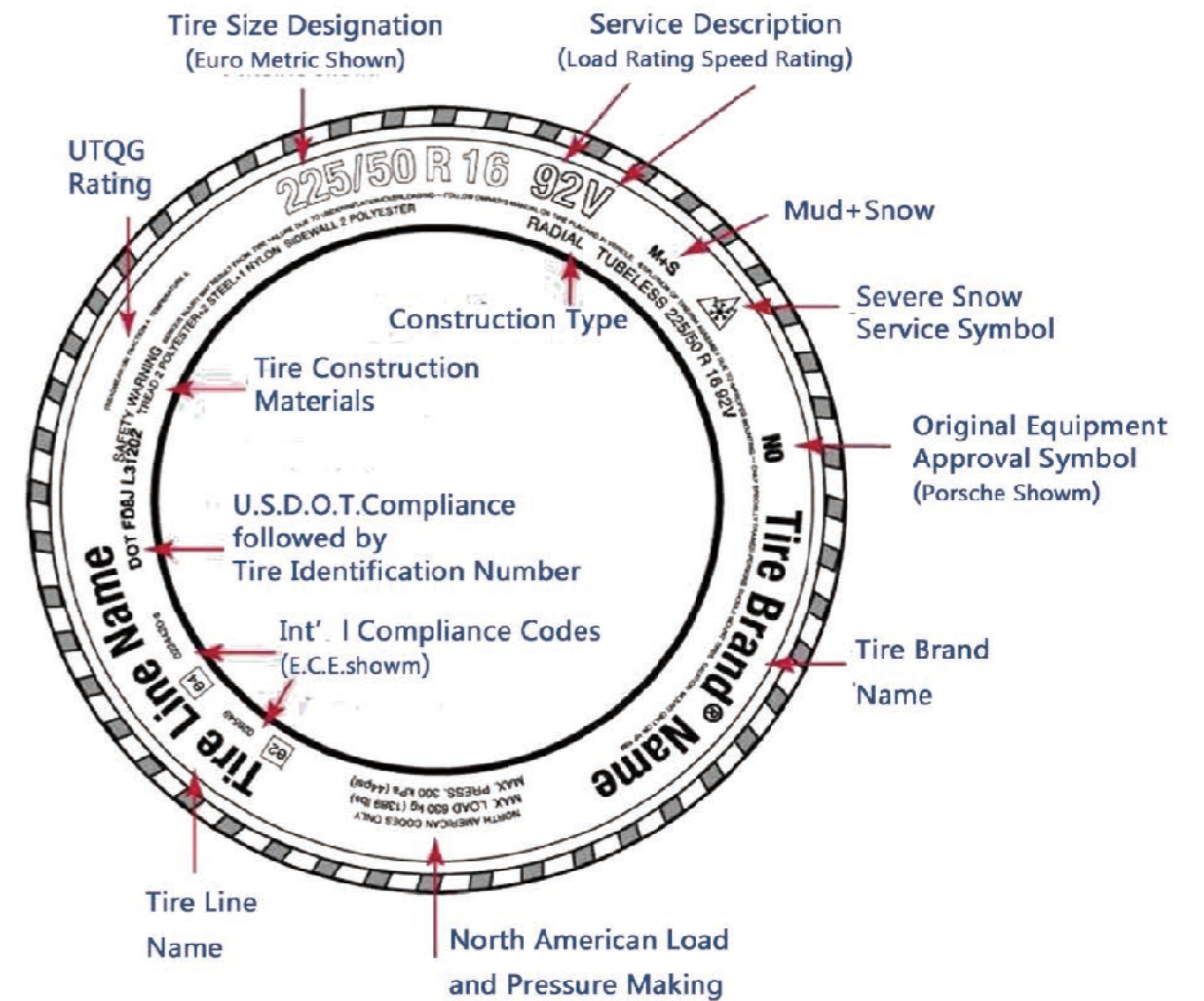
- ★ Powerful traction resistance,grip climbing ability and self-cleaning
- ★ Deep-groove design for excellent wear resistance
- ★ Deep block design for good wearability,cut and tear resistance
- ★ The new structural of the bead with excellent load capacity



○ Standard wheel ○ Permitted wheel ✗ Prohibit wheel

Size Description	Ply Rating	Load Index	Speed Rating	Standard Rim(Inch)	Tread Depth(MM)	Section Width(MM)	OA.Diameter(MM)	Max.Pressur(KPA/PSI)
11.00R20	18	152/149	G	8.00	21.0	293	1085	930/135
9.00R20	16	144/142	G	7.00	21.0	259	1019	900/131
10.00R20	18	149/146	G	7.50	21.0	278	1054	930/135
12.00R20	20	156/153	G	8.50	22.0	315	1125	930/135

Technical Parameters



Our Manufacture:SHANDONG HAOHUA TIRE CO.,LTD

Location:Houzhen Industry zone Shouguang ShanDong China

Area:800,000 M Including 3 workshops,4 warehouses and 3 office buildings

Total Capacity:20Million PCR&2Million TBR per year

Investments:200Million USD

Staffs:Around 4000 persons

Equipments:First class equipments are from Germany,Holland,Japan and China

Approved Quality standards:ISO/DOT/ECE/GCC/INMETRO/SONCAP

Main Values:GREEN,SAFETY AND ECONOMY